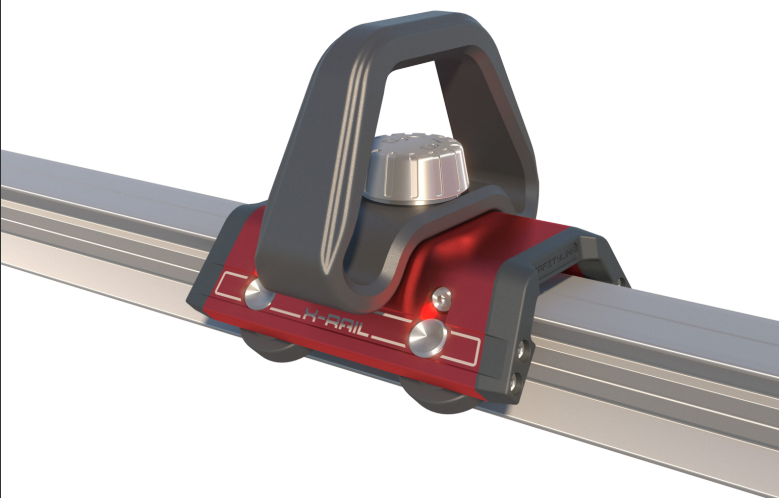




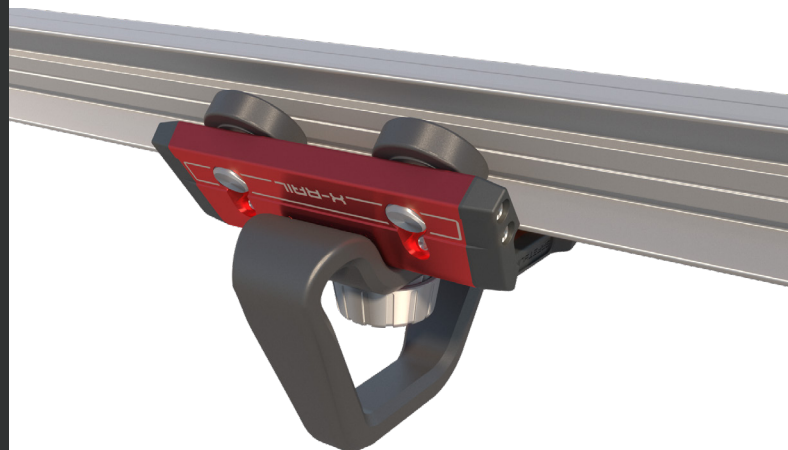
X-RAIL

Horizontal Rail Systems

Floor Mounted



Ceiling Mounted



SafetyLink Pty Ltd **1300 789 545**
+61 2 4964 1068 info@safetylink.com

**'Innovative
Fall Protection'**

For further information and to order our products visit our website.

www.safetylink.com

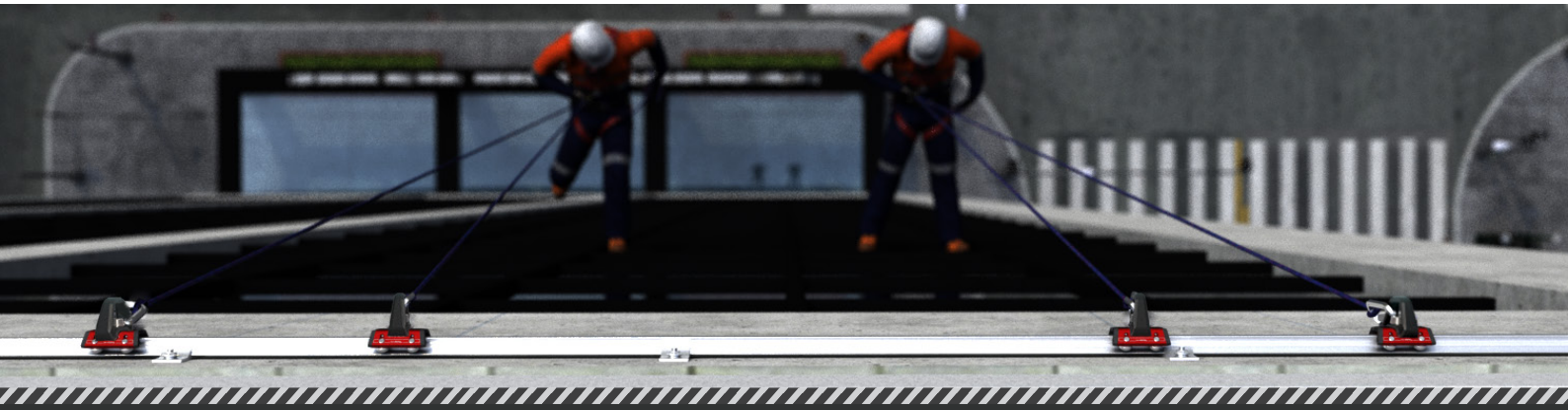
X-RAIL



Innovation and attention to detail is always foremost in our minds when designing new products. The **X-RAIL** rail system demonstrates this with its uniquely designed rail. The rail is designed to achieve access to a wide range of scenarios, forming a complete system.

The SafetyLink **X-RAIL** is an Australian Made rail system suitable for use as part of a personal fall protection system. The **X-RAIL** offers a horizontal rail system with one or multiple Mobile Anchor Points for attaching to. The **X-RAIL** can be installed in three orientations; overhead, wall and floor.

- ▲ Australian Made.
- 🔗 Can be used for a live load (abseiling).
- 🔗 For use on steel and concrete structures.
- 🔗 **X-RAIL** is suitable when limited fall clearance is available.
- 🔗 Custom made rail sections and corners can also be supplied upon request to meet your personal requirements.
- 🔗 Custom bends up to a 400mm radius.
- 🔗 Easy for pull testing when installed into concrete.
- 🔗 Easily integrated into the structure of a building and allowing continuous movement with innovative shuttle.
- 🔗 Uniquely designed shuttle is designed to traverse smoothly through system, eliminating realignment of shuttle.
- 🔗 The **X-RAIL** horizontal rail system is compliant with AS/NZS 1891.2, EN795:2012 and PD CEN/TS 16415:2013.



SafetyLink will provide you with the following:

- 🔗 All products tested and manufactured to AS/NZS 1891.2, EN795:2012 and PD CEN/TS 16415:2013.
- 🔗 All distributors and installers are trained to use SafetyLink products.
- 🔗 Supply installation guides, testing results and product sheets.
- 🔗 Layout Design Service providing compliant roof safety systems.
- 🔗 Supply a large range of roof anchors that protect you from the ground up, allowing complete access to your roof.
- 🔗 Installers are qualified to do yearly inspections on your anchors as per current Standards.

**'Innovative
Fall Protection'**



SafetyLink Pty Ltd **1300 789 545**
+61 2 4964 1068 info@safetylink.com



FS 707792

For further information and to order our products visit our website.

www.safetylink.com