



SCAN ME
Terms and Conditions



SCAN ME
Catalogue



SCAN ME
Installation Handbook



SCAN ME
Installation Video Metal Roof



SCAN ME
Installation Video Tiled Roof

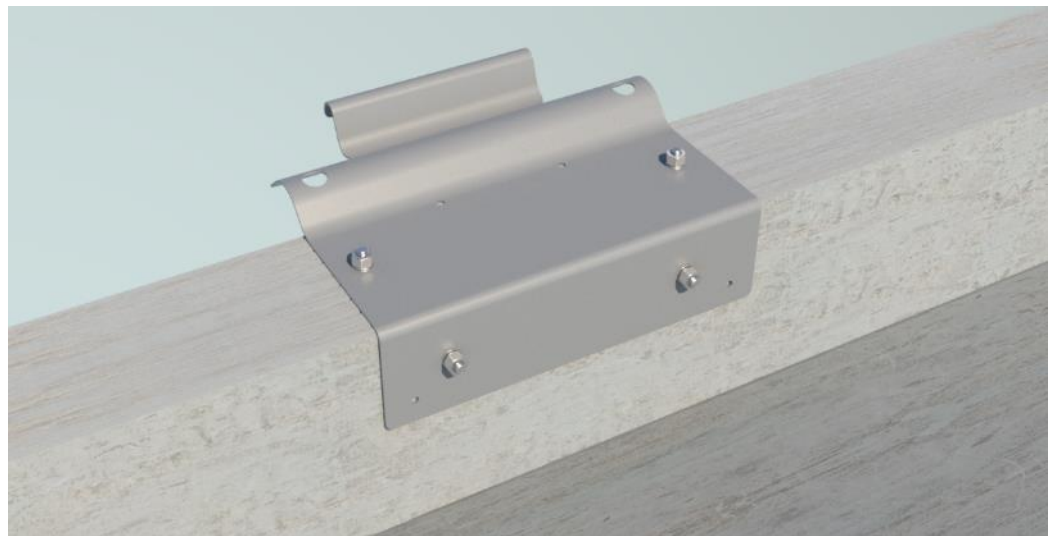
DATA SHEET



FS 707792

LADDERLINK

Parapet Mounted Fixed Ladder Bracket | Product Code: LADFX010



- Parapet mounted ladder bracket, fits directly onto parapet.
- Quick and easy installation.
- Essential entry point system to stabilise your ladder.
- LadderLinks have a protective membrane in the form of a powdercoat finish, this ensures your LadderLink is ready for use and ready for any additional colour matching you apply.
- LadderLinks are rated to 150kg and must only be installed to structures and fixings capable of supporting 150kg.

WHAT AM I USED FOR?

Essential entry point system to any height safety system. Made from marine grade aluminium the LadderLink is designed to support a ladder, stopping sideways movement and therefore holding the ladder in place safely.

COMPLETE UNIT - PRODUCT CODE: LADFX003

Product Parts	Description	Qty	Weight (kg)	Material
LADFX010	Ladderink: Parapet Mounted	1	2.203	Marine Grade Aluminium

- ⚠ Adjusting the pitch of the LadderLink is to be done by a sheet metal fabricators' bending machine. LadderLink is made from high tensile aluminium therefore ensure the bender is set on a high radius to prevent cracking.
- ⚠ Protective coating must not be removed.



© 2018, SafetyLink Pty Ltd, Australia.

Patents: SafetyLink Pty Ltd has a multitude of patents, patents pending, design applications, trademarks and copyrighted documents both lodged and issued. Should you wish to know the progress of our intellectual property on a specific product please email us on ip@safetylink.com and quote the product code.

Doc ID: MKT-492 Version: 8.0

Asia-Pacific/The Americas
+61 249641068
info@safetylink.com

Europe/Africa/Middle East
+33 619493867
europa.sales@safetylink.com

Northern Europe
+44 7599508290
uk.sales@safetylink.com